

# J Series

## Jumbo Filter Housings



### Applications

- Potable Drinking Water
- Industrial Waste Water Treatment
- Process Water
- Reverse Osmosis Prefiltration
- Cooling Tower Filtration
- Desalination Prefiltration
- Food and Beverage
- Oil / Gas
- Paints / Inks / Coatings
- Paper and Pulp



**USA MADE**

*Residential / Commercial / Industrial  
Filtration Applications*

### Standard Features

- Manufactured in USA
- Accepts single jumbo cartridge for easy installation and replacement
- Heavy-duty 304L or 316L stainless steel construction for maximum durability and corrosion resistance
- V-band clamp or swing bolt closures for quick and easy cartridge change-outs and secure sealing
- Available in three sizes to support flow rates up to 150 GPM
- Standard with pressure gauges, mounting legs, female national pipe thread and grounding lug
- Extensive choice of cartridge micron ratings – 0.35, 1, 5, 10, 20, 50 and 100

### Specifications, Operating Parameters and Options

#### Maximum Operating Pressure

150 psig (10.3 bar) @ 300°F (149°C)

#### Connections

Inlet/Outlet: Standard – 2" FNPT

Optional: MNPT or BSP fittings; RF flanges,  
Sanitary ferrules or grooved fittings

Drain Ports: 1/2" NPT

Vent Ports: 1/4" NPT

#### Materials of Construction

Head/Shell/Connections: 304L or 316L stainless steel

Closure: Clamp – 304L stainless steel

Swing bolts – zinc plated steel

Vent and Drain Plugs: 304L or 316L stainless steel

#### Gaskets

Standard: Buna N (FDA grade)

Optional: EPR, silicone, Teflon encapsulated silicone, Viton

#### Finish

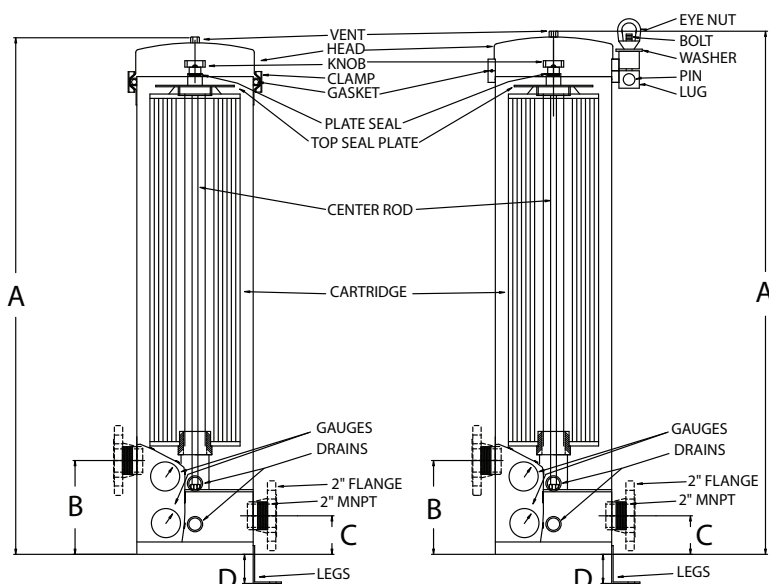
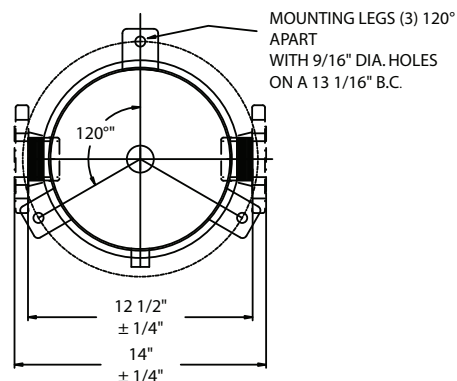
Poly-coat on exterior surfaces

Optional: Electropolish, glass bead, passivate, or  
3M™ Coating

MODEL	MAXIMUM FLOW GPM (LPM)	MAXIMUM DIAMETER CARTRIDGE	CLAMP STYLE (BCJ)	SWING BOLT STYLE (SBJ)			
			<b>A</b>	<b>A</b>	<b>C</b>	<b>C</b>	<b>D</b>
BCJ40 / SBJ40*	50 (185.5)	7-3/4"	27" (68.6 cm)	27-1/2" (69.9 cm)	8-1/16" (20.5 cm)	3-3/16" (8.4 cm)	2-1/2" (6.4 cm)
BCJ90 / SBJ90	100 (371.10)	7-3/4"	37" (94.0 cm)	37-1/2" (85.3 cm)	8-1/16" (20.5 cm)	3-3/16" (6.4 cm)	2-1/2" (6.4 cm)
BCJ170/SBJ170	150 (594.3)	7-3/4"	47" (119.4 cm)	47-1/2" (120.7 cm)	8-1/16" (20.5 cm)	3-3/16" (8.4 cm)	2-1/2" (6.4 cm)

\* BCJ = V Band Clamp Housing SBJ = Swing Bolt Housing

## Dimensions

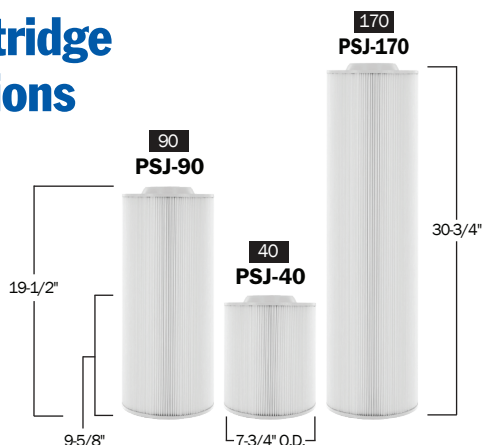


## Ordering Guide (Example: BCJ170-316L-2MT-HD-E)

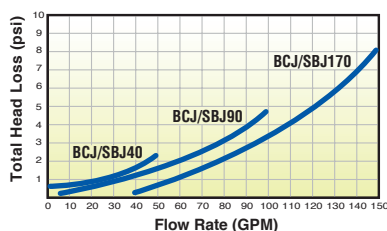
BCJ		170 – 316L – 2		MT –		HD –		E	
MODEL	CARTRIDGE SERIES	MATERIAL	CONNECTION SIZE	CONNECTION TYPE		OPTIONS		GASKET	
BCJ = V-Band Clamp SBJ = Swing Bolt	40 = 40 Series 90 = 90 Series 170 = 170 Series	304L (standard) 316L 304LC* 316LC* 304LEP** 316LEP**	2" (standard) 1" 1.5"	FT =	FNPT (standard)†	Blank =	Legs, Gauge Ports, Pressure Gauges (standard) Passivate	Blank =	Buna N (standard) E = EPR S = Silicone V = Viton TS = Teflon
				BP =	BSP				
				FL =	Flange				
				GF =	Grooved				
				MT =	MNPT				
				TC =	Ferrules				

\* LC = 3M™ Coated \*\*LEP = Electropolish † MNPT fittings are available in 1.5 and 2 inches.

## Cartridge Options



## Pressure Drop



Above: Pressure drop is for filter housing and 20 micron filter cartridge in clean water.



**Filter Cartridges Selection Guide**  
CLICK HERE

DISTRIBUTED BY: