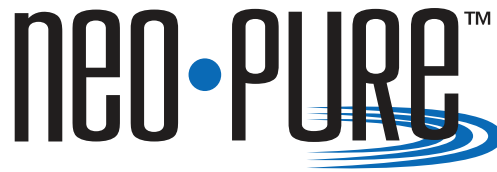


MB Series

Multi Bag Filter Housings



Applications

- Water
- Food and Beverage
- Electronics
- Coolants
- Oil / Gas
- Paints / Inks / Coatings
- Paper and Pulp
- Chemicals



USA MADE

Commercial / Industrial Filtration Applications

Standard Features

- Manufactured in USA
- Designed for high flow commercial or industrial filter applications
- Heavy-duty 304L or 316L stainless steel construction for maximum durability and corrosion resistance
- Optional 134 epoxy coating for seawater or corrosive applications
- Uses #2 Filter Bags (7x32")

2 Round Housings with V-Band Clamp Closure:

- V-band clamp closure for quick and easy bag change-outs and secure sealing
- 3" flanged connections
- 150 PSI pressure rating up to 250°F

2 Round through 6 Round Housings with Swing Bolt Closure:

- Heavy duty swing bolt closure with davit assembly ideal for larger flow applications
- Davit handle and eye nuts are zinc-plated to prevent gauling
- 150 PSI pressure rating up to 300°F

Specifications, Operating Parameters and Options

Maximum Operating Pressure

150 psig (10.3 bar) @ 250°F (121°C) – V-band clamp closure
150 psig (10.3 bar) @ 300°F (149°C) – Swing bolt closure

Connections

Inlet/Outlet:

3" RF flanges (BCMB2 and SBMB2)

4" RF flanges (SBMB3 and SBMB4)

6" RF flanges (SBMB5 and SBMB6)

Optional: RF flanges or sanitary ferrules

Drain Ports: 1/2" FNPT (BCMB2) – 3/4" FNPT (SBMB2-SBMB6)

Vent Ports: 1/2" FNPT – Gauge Ports: 1/4" FNPT

Materials of Construction

Head/Shell/Connections: 304L or 316L stainless steel

Davit Handle and Eye Nuts: Zinc-plated steel

Mounting Legs: 304L stainless steel

Gaskets

Standard: Buna N (FDA grade)

Optional: EPR, silicone, Teflon encapsulated silicone, Viton

Finish

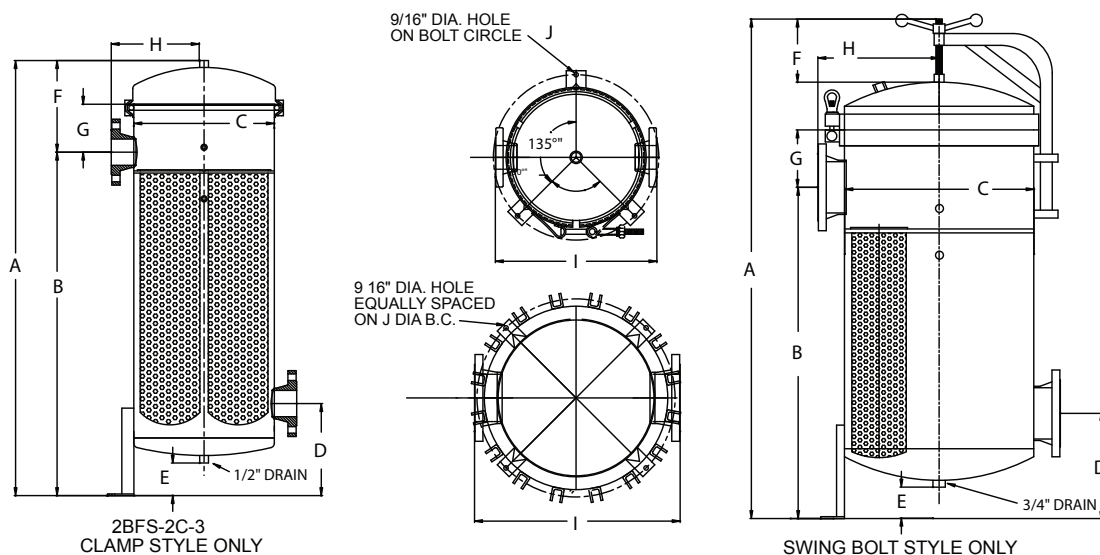
Poly-coat on exterior surfaces

Optional: 134 coating or electropolish

MODEL	CLOSURE	MAX. FLOW* GPM (LPM)	DIMEN- SIONS (in - cm)									
			A	B	C	D	E	F	G	H	I	J
BCMB-2	V-Band Clamp	350 (1325)	49-9/16" (125.9)	39-1/8" (99.4)	16" (40.6)	10-1/2" (26.7)	4-1/8" (10.5)	11-5/8" (29.5)	13-5/8" (34.6)	10-9/16" (26.8)	20-1/2" (52.1)	20-15/16" (53.2)
SBMB-2	Swing Bolt	350 (1325)	49-9/16" (125.9)	39-1/8" (99.4)	16" (40.6)	10-1/2" (26.7)	3-11/16" (9.4)	10" (25.4)	6-7/8" (17.5)	10-9/16" (26.8)	20-1/2" (52.1)	20-15/16" (53.2)
SBMB-3	Swing Bolt	525 (1987)	52-7/8" (134.3)	41-1/16" (104.3)	20" (50.8)	10-3/4" (27.2)	3-1/4" (8.3)	10" (25.4)	6-1/4" (15.9)	12-5/16" (31.3)	22-5/8" (57.5)	25" (63.5)
SBMB-4	Swing Bolt	700 (2650)	61-1/4" (155.6)	40-1/2" (102.9)	20" (50.8)	11-1/4" (28.6)	3-1/4" (8.3)	10" (25.4)	8" (20.3)	12-7/8" (32.7)	26-1/16" (66.2)	25" (63.5)
SBMB-5	Swing Bolt	700 (3312)	63-1/2" (161.3)	42" (106.7)	24" (61.0)	13-3/8" (34.0)	4" (10.2)	10" (25.4)	7-1/4" (18.4)	15-3/8" (39.0)	30" (76.2)	29" (73.7)
SBMB-6	Swing Bolt	1050 (3975)	63-1/2" (161.3)	42" (106.7)	24" (61.0)	13-3/8" (34.0)	4" (10.2)	10" (25.4)	7-1/4" (18.4)	15-3/8" (39.0)	30" (76.2)	29" (73.7)

* Flow rates are approximate. Actual flow rates are based upon fluid, viscosity, bag type, micron ratings and other factors.

Dimensions



Filter Bags

[CLICK HERE](#)

For filter bag options, see
Bag Filter Brochures

High Density Filter Bags

[CLICK HERE](#)

Ordering Guide (Example: SBMB-3-304LEP4-B-E)

SBMB - 3 - 304LEP 4 - B - E					
MODEL	# OF BAGS	MATERIAL/ FINISH	INLET/ OUTLET SIZE/TYPE	ORIENTATION	GASKET
BCMB = Band Clamp Multi Bag	2 3	Blank = 304L (standard)	3 = 3" Flange 4 = 4" Flange 6 = 6" Flange	Blank = Side In / Side Out (standard)	Blank = Buna N (standard)
SBMB = Swing Bolt Multi Bag	4 5 6	316L = 316L 304LC = 304L Coated 316LC = 316L Coated 304LEP = 304L Electropolished 316LEF = 316L Electropolished		B = Side In / Bottom Out	E = EPR S = Silicone V = Viton T = Teflon Encapsulated Silicone

DISTRIBUTED BY: