

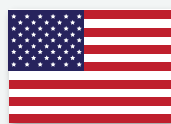
Multi-Cartridge Filter Housings

12 and 22 Round Series



Applications

- Water
- Chemicals
- Electronics
- Power
- Cooling Tower Filtration
- Desalination Prefiltration
- Food and Beverage
- Oil / Gas
- Paints / Inks / Coatings
- Paper and Pulp



USA MADE

Commercial / Industrial Filtration Applications

Standard Features

- Manufactured in USA
- Holds 30" or 40" lengths for optimal choice of flow rates
- Heavy-duty 304L or 316L stainless steel construction for maximum durability and corrosion resistance
- V-band clamp or swing bolt closures for quick and easy cartridge change-outs and secure sealing
- Top spring seals allow for variable length cartridges
- Universal seal cups and compression plates accept DOE and 222/FLAT or FIN cartridges – standard on all filter housings
- 1/4" gauge port on body – standard on all filter housings

Specifications, Operating Parameters and Options

Maximum Operating Pressure

150 psig (10.3 bar) @ 300°F (149°C)

Connections

Inlet/Outlet: 3" (12 round) and 4" (22 round) RF Flanges

Optional: RF flanges, sanitary ferrules, MNPT, FNPT, BSP or grooved fittings

Drain Ports: 1/2" FNPT

Vent Ports: 1/4" FNPT (12 round), 1/2" FNPT (22 round)

Materials of Construction

Head/Shell/Connections: 304L or 316L stainless steel

Closure: Clamp – 304L stainless steel

Swing bolts – zinc plated steel

Vent and Drain Plugs: 304L or 316L stainless steel

Mounting Legs: 304L stainless steel

Gaskets

Standard: Buna N (FDA grade)

Optional: EPR, silicone, Teflon encapsulated silicone, Viton

Finish

Poly-coat on exterior surfaces

Optional: 3MTM coating, electropolish, glass bead or passivate

Cartridge Type

DOE style cartridges (maximum 2-3/4" diameter for 12 round and 2-5/8" diameter for 22 round series) OR

222/FLAT or FIN cartridges – standard on all filter housings

22 round series holds 21 cartridges, order as 21 round housing

Custom Options

See ordering guide for complete selection of options

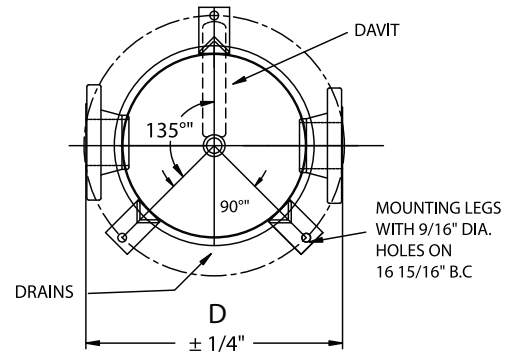
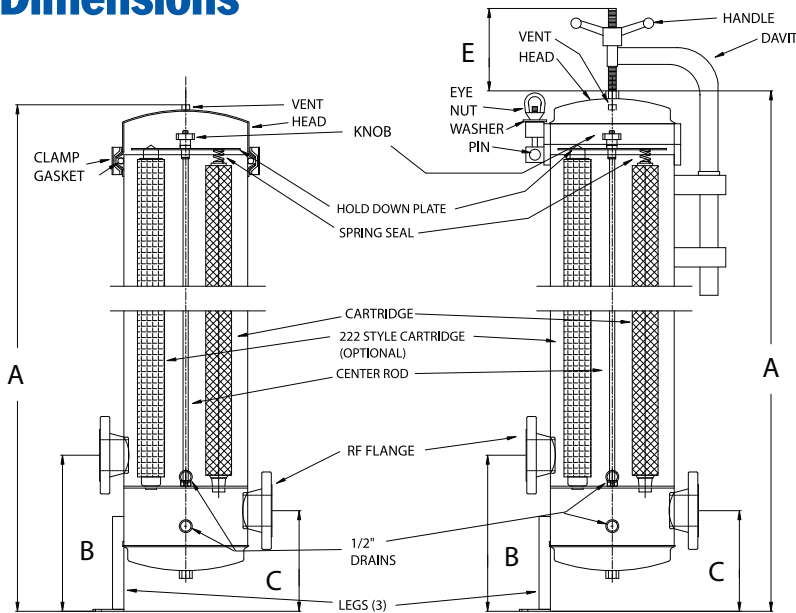
MODEL	QUANTITY (LENGTH) OF CARTRIDGES +	RATED FLOW CAPACITY* GPM (LPM)	INLET/OUTLET (PIPE SIZE)	MAXIMUM DIAMETER CARTRIDGE	CLAMP STYLE	SWING BOLT STYLE				
					A	A	B	C	D	E
BCM12X2/SBM12X2	12 (20")	168 (636)	3"	2-3/4"	39-1/2" (100.3 cm)	40-1/2" (102.9 cm)	15-3/8" (39.1 cm)	10" (25.4 cm)	16-11/16" (42.5 cm)	8" (20.3 cm)
BCM12X3/SBM12X3	12 (30")	252 (954)	3"	2-3/4"	49-1/2" (125.7 cm)	50-1/2" (128.3 cm)	15-3/8" (39.1 cm)	10" (25.4 cm)	16-11/16" (42.5 cm)	8" (20.3 cm)
BCM12X4/SBM12X4	12 (40")	330 (1272)	3"	2-3/4"	59-1/2" (151.1 cm)	60-1/2" (153.7 cm)	15-3/8" (39.1 cm)	10" (25.4 cm)	16-11/16" (42.5 cm)	8" (20.3 cm)
BCM22X3/SBM22X3**	22 (30")	462 (1749)	4"	2-5/8"**	50-3/16" (127.5 cm)	50-3/16" (127.5 cm)	15-1/4" (38.7 cm)	9-1/2" (24.1 cm)	21" (53.3 cm)	12" (25.4 cm)
BCM22X4/SBM22X4**	22 (40")	616 (2332)	4"	2-5/8"**	60-3/16" (152.9 cm)	50-3/16" (127.5 cm)	15-1/4" (38.7 cm)	9-1/2" (24.1 cm)	21" (53.3 cm)	12" (25.4 cm)

+ Housings will accept cartridge lengths: 10" = (9-3/4" or 10"), 20" = (19-1/2" or 20"), 30" = (29-1/4" or 30") and 40" = (39" or 40")

* Based upon 7 gpm per 10" length with a 25 micron wound cartridge at 2 PSID clean and viscosity of 1 cps. Flow rates are for guidelines only. Actual flow rates are based on fluid, viscosity, cartridge type, micron ratings and other factors.

** When using 222 or 226 connectors, you must change to a 21FOS housing (21 round) for 2-3/4" OD cartridges.

Dimensions



Filter Cartridges Selection Guide
CLICK HERE

Ordering Guide (Example: BCM12X3-316L-226-2FC-PG-E)

BCM12X	3	-	316L	-	226	-	2	FC	-	PG	-	E
MODEL	CARTRIDGE LENGTH		MATERIAL /FINISH		CARTRIDGE CONFIGURATION		INLET/OUTLET	CONNECTION TYPE		OPTIONS		GASKET
BCM12X = 12 cartridges	1 = 10",		Blank = 304L		Blank = DOE		2 = 2"	FT = FNPT 3,5,7		Blank = Mounting Legs,		Blank = Buna N
BCM22X = 22 cartridges	9-7/8",		(Standard)		(Standard)		(Standard up to 7 round)	FC = Female		Gauge Ports		(Standard)
(V-Band Clamp Closure)	2 = 20",		316L = 316L		226 = 226 Fin/Flat			BT = BSP Tapered		(Standard)		E = EPR
	9-3/4"		304LC = 304L Coated					BP = BSP Parallel		Pressure		S = Silicone
	3 = 30",		316LC = 316L Coated					FL = Flange 12+ (Standard)		Gauges (2)		V = Viton
	19-1/2"		304LEP = 304L					TC = Ferrules		Passivate		T = Teflon
	20-1/4"							GF = Grooved Fittings				Encapsulated
SBM12X = 12 cartridges	4 = 40"		316LEP = 316L									Silicone
SBM22X = 22 cartridges			304LGB = 304L									
(Swing Bolt Closure)			Glass Bead									

DISTRIBUTED BY: