

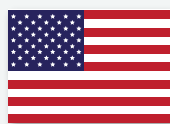
Multi-Cartridge Filter Housings

7 Round Series



Applications

- Water
- Chemicals
- Electronics
- Power
- Cooling Tower Filtration
- Desalination Prefiltration
- Food and Beverage
- Oil / Gas
- Paints / Inks / Coatings
- Paper and Pulp



USA MADE

Commercial / Industrial Filtration Applications

Standard Features

- Manufactured in USA
- Holds seven cartridges from 10" to 40" lengths for optimal choice of flow rates
- Heavy-duty 304L or 316L stainless steel construction for maximum durability and corrosion resistance
- V-band clamp or swing bolt closures for quick and easy cartridge change-outs and secure sealing
- Adjustable top plate accepts variable length cartridges
- Universal seal cups and compression plates accept DOE & 222/FLAT or FIN cartridges – standard on all filter housings
- 1/4" gauge port on body – standard on all filter housings
- FNPT inlet and outlet connections – standard on 4, 5 and 7 round

Specifications, Operating Parameters and Options

Maximum Operating Pressure

150 psig (10.3 bar) @ 300°F (149°C)

Connections

Inlet/Outlet: Standard – 2" FNPT

Optional: MNPT or BSP fittings; RF flanges,
Sanitary ferrules or grooved fittings

Drain Ports: 1/2" FNPT

Vent Ports: 1/4" FNPT

Materials of Construction

Head/Shell/Connections: 304L or 316L stainless steel

Closure: Clamp – 304L stainless steel

Swing bolts – zinc plated steel

Vent and Drain Plugs: 304L or 316L stainless steel

Gaskets

Standard: Buna N (FDA grade)

Optional: EPR, silicone, Teflon encapsulated silicone, Viton

Finish

Poly-coat on exterior surfaces

Optional: 3M® coating, electropolish, glass bead or passivate

Cartridge Type

DOE or 222 style cartridges (maximum 2-3/4" OD) OR

222/FLAT or FIN cartridges – standard on all filter housings

Custom Options

See ordering guide for complete selection of options

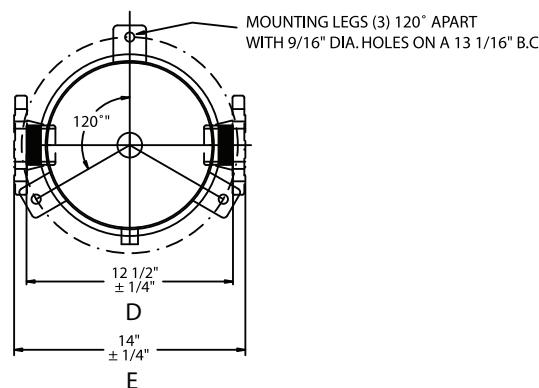
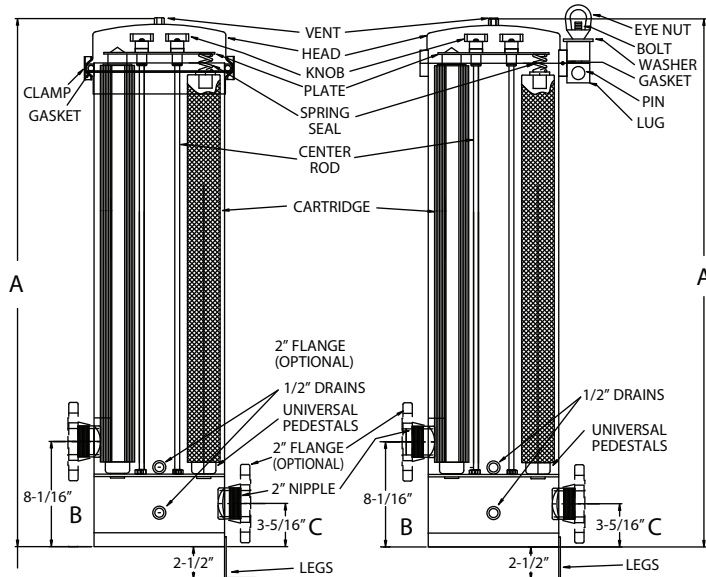
MODEL	QUANTITY (LENGTH) OF CARTRIDGES +	RATED FLOW CAPACITY* GPM(LPM)	INLET/OUTLET (PIPE SIZE)	MAXIMUM DIAMETER CARTRIDGE	CLAMP STYLE	SWING BOLT STYLE				
					A	A	B	C	D	E
BCM7X1/SBM7X1	7 (10")	49 (185.5)	2"	2-3/4"	20-1/2" (52.1 cm)	21" (53.3 cm)	8-1/16" (20.48 cm)	3-5/16" (8.41 cm)	12-1/2" (31.75 cm)	14" (35.56 cm)
BCM7X2/SBM7X2	7 (20")	98 (371.10)	2"	2-3/4"	30-7/8" (78.4 cm)	40-1/2" (102.9 cm)	8-1/16" (20.48 cm)	3-5/16" (8.41 cm)	12-1/2" (31.75 cm)	14" (35.56 cm)
BCM7X3/SBM7X3	7 (30")	157 (594.3)	2"	2-3/4"	40-7/8" (103.8 cm)	50-1/2" (115.4 cm)	8-1/16" (20.48 cm)	3-5/16" (8.41 cm)	12-1/2" (31.75 cm)	14" (35.56 cm)
BCM7X4/SBM7X4	7 (40")	196 (741.9)	2"	2-3/4"	50-7/8" (129.2 cm)	60-1/2" (153.7 cm)	8-1/16" (20.48 cm)	3-5/16" (8.41 cm)	12-1/2" (31.75 cm)	14" (35.56 cm)

+ Housings will accept cartridge lengths: 10" = (9-3/4" or 10"), 20" = (19-1/2" or 20"), 30" = (29-1/4" or 30") and 40" = (39" or 40")

* Based upon 7 gpm per 10" length with a 25 micron wound cartridge at 2 PSID clean and viscosity of 1 cps. Flow rates are for guidelines only.

Actual flow rates are based on fluid, viscosity, cartridge type, micron ratings and other factors.

Dimensions



Filter Cartridges Selection Guide
CLICK HERE

Ordering Guide (Example: BCM7X3-316L-226-2FC-PG-E)

BCM7X	3	-	316L	-	226	-	2	FC	-	PG	-	E
MODEL	CARTRIDGE LENGTH		MATERIAL /FINISH		CARTRIDGE CONFIGURATION		INLET/OUTLET	CONNECTION TYPE		OPTIONS		GASKET
BCM7X = 7 cartridges (V-Band Clamp Closure)	1 = 10", 9-7/8", 9-3/4"		Blank = 304L (Standard)		Blank = DOE (Standard)		2 = 2" (Standard up to 7 round)	FT = FNPT 3,5,7 (Standard)		Blank = Mounting Legs, Gauge Ports (Standard)		Blank = Buna N (Standard)
	2 = 20", 19-1/2"		316L = 316L		226 = 226 Fin/Flat			FC = Female Couplings		PG = Pressure Gauges (2)		E = EPR
SBM7X = 7 cartridges (Swing Bolt Closure)	3 = 30", 20-1/4"		304LC = 304L Coated				3 = 3"	BT = BSP Tapered		P = Passivate		S = Silicone
	4 = 40"		316LC = 316L Coated				4 = 4"	BP = BSP Parallel				V = Viton
			304LEP = 304L Electropolished				6 = 6"	FL = Flange 12+ (Standard)				T = Teflon
			316LEP = 316L Electropolished				8 = 8"	TC = Ferrules				Encapsulated Silicone
			304LGB = 304L Glass Bead					GF = Grooved Fittings				

DISTRIBUTED BY: