

# SFB Series

## Single Filter Housings

### Big Blue® Type



## Applications

- Potable Water
- Food and Beverage
- Electronics
- Coolants
- Wastewater
- Paints / Inks / Coatings
- Photographic Solutions
- Chemicals
- Plating Solutions
- Desalination Prefiltration



*Commercial / Industrial  
Filtration Applications*

## Standard Features

- Manufactured in the USA
- Designed for commercial or industrial filter applications
- Heavy-duty 304L stainless steel construction for maximum durability and corrosion resistance
- Specifically designed for high temperature and high pressure applications
- Uses 4-1/2" diameter (Big Blue® style) double open-end (DOE) cartridges
- Ring nut closure for quick cartridge change-outs
- Spring-loaded knife-edge seals provides positive sealing for variable length cartridges
- Includes mounting bracket kit for easy installation

## Specifications, Operating Parameters and Options

### Maximum Operating Pressure

150 psig (10.3 bar) @ 200°F (93°C)

### Connections

Inlet/Outlet: 1" FNPT

Drain Port: Quick-twist fitting

### Materials of Construction

Head/Shell/Connections: 304L stainless steel

### Gaskets

Standard: Buna N (FDA grade)

Optional: EPR, Viton

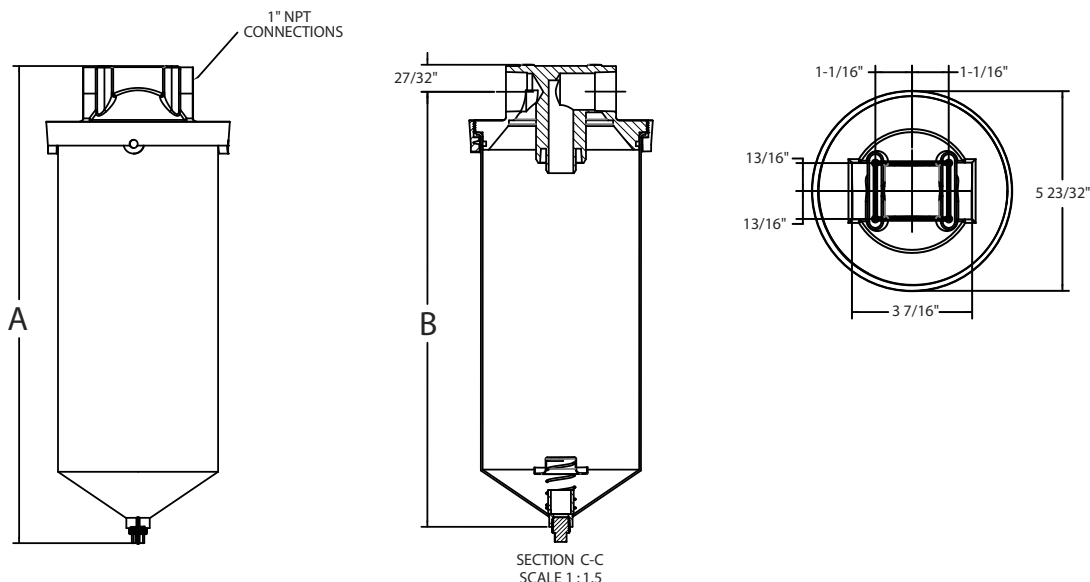
### Finish

Polycoat on exterior surfaces

MODEL	QUANTITY (LENGTH) OF CARTRIDGES	MAXIMUM FLOW RATE* GPM (LPM)	MAXIMUM DIAMETER CARTRIDGE	DRAIN SIZE	DIMENSIONS	
					A	B
SFB1	1 (10")	12.5 (473)	4-1/2"	1/4"	15" (38.1 cm)	5-3/4" (14.6 cm)
SFB2	1 (20")	25 (94.6)	4-1/2"	1/4"	25" (63.5 cm)	5-3/4" (14.6 cm)

\* Based upon 12.5 gpm (47.3 lpm) per 10" cartridge length with a 25 micron wound cartridge at 2 PSID clean and viscosity of 1 cps. Flow rates are approximate. Actual flow rates are based upon fluid, viscosity, cartridge type, micron ratings and other factors.

## Dimensions



## Ordering Guide (Example: SFB2-E)

SFB	2	-	E	
MODEL	CARTRIDGE LENGTH	MATERIAL	CONNECTION	GASKET
SFB	1 = 10", 9-7/8", 9-3/4" 2 = 20"	Blank = 304L (standard)	Blank = 1" FNPT (standard)	Blank = Buna N (standard) E = EPR V = Viton

## Cartridge Options

Available in 9-3/4" and 20" Lengths



**Filter Cartridges Selection Guide**  
CLICK HERE



**Meltblown Sediment Cartridges**  
For more information, see **MB Series Brochure**



**String Wound Cartridges**  
For more information, see **WPP Series Brochure**



**Pleated Filter Cartridges**



**NeoLogic**  
SOLUTIONS  
Filtration Division

9450 SW Gemini Dr, ECM #83358, Beaverton, OR 97008  
Tel 855-896-3525 | Fax 866-409-9622  
www.neologicsolutions.com  
email: info@neologicsolutions.com  
STUART, FL | BEAVERTON, OR | GREENVILLE, SC | SAN DIEGO, CA

**Questions?**

Ask one of our Service Representatives:  
Mon-Fri 8a-8p, Sat 8:30a-4:30p EST

We ship 6 days a week! **FedEx**